



**Network Management
to assist with migration**

Radio Comms Connect 2011

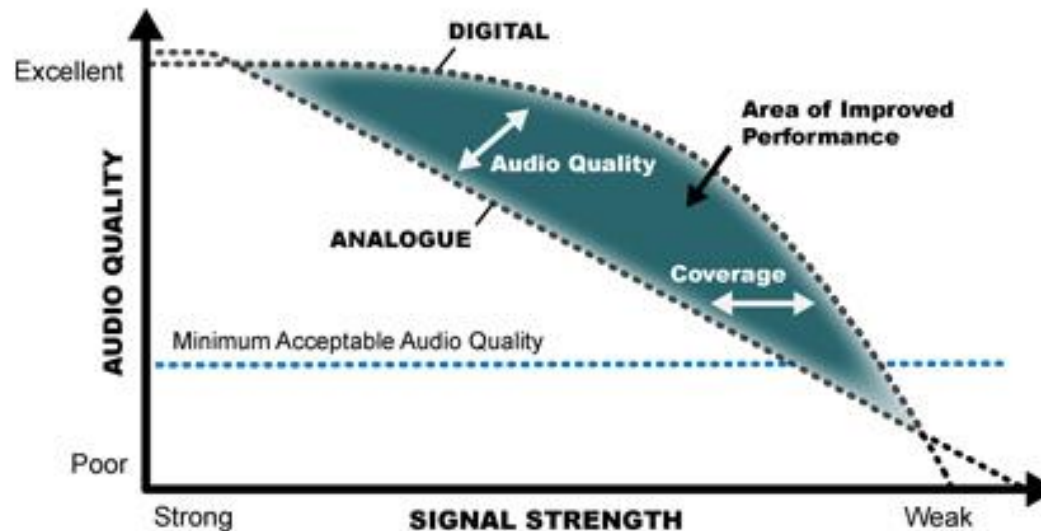
Monique Princen
Solution Marketing Manager
Tait Radio Communications

You will have a successful migration when

- **The new network meets your requirements**
- **Service is maintained during the change over**
- **Users know how to use the new network**
- **None of the end-user devices is missed**

This presentation

- Will explain the steps to a successful migration
- Demonstrate how network management can be used to improve the chances of success



BEFORE YOU START

A successful migration starts early

Whatever your reason for change, your new network performs better when you:

Audit your current system

Know what you have now and how it is used

Define your desired outcomes

How can it improve your business

When you know your outcomes

Define desired Re-use



**Design the new
communication system**



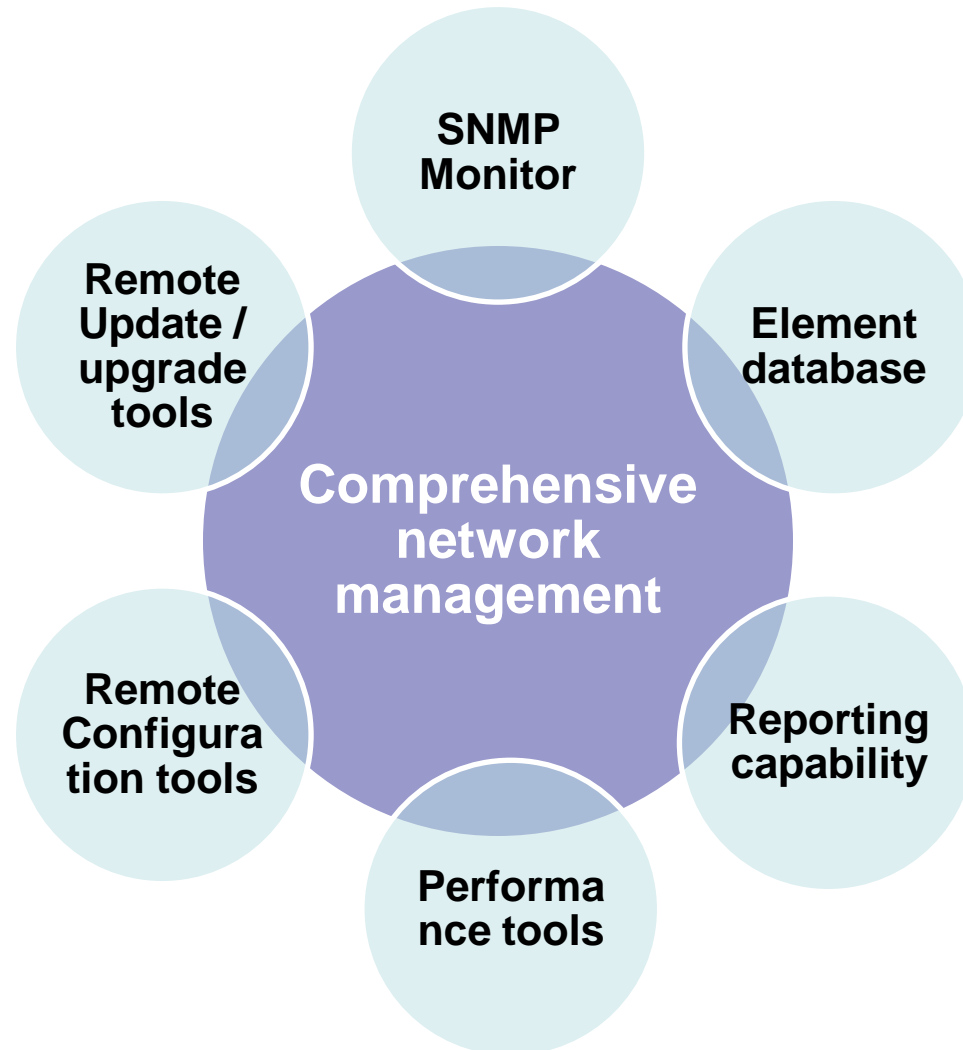
**Define the migration
strategy that fits your needs**



Execute

THE ROLE OF NETWORK MANAGEMENT

Comprehensive Network Management



Audit your network

- **Network monitoring tools inform you on:**
 - Your network configuration
 - The capacity you have available
 - The stability of the network
 - Current problem area's



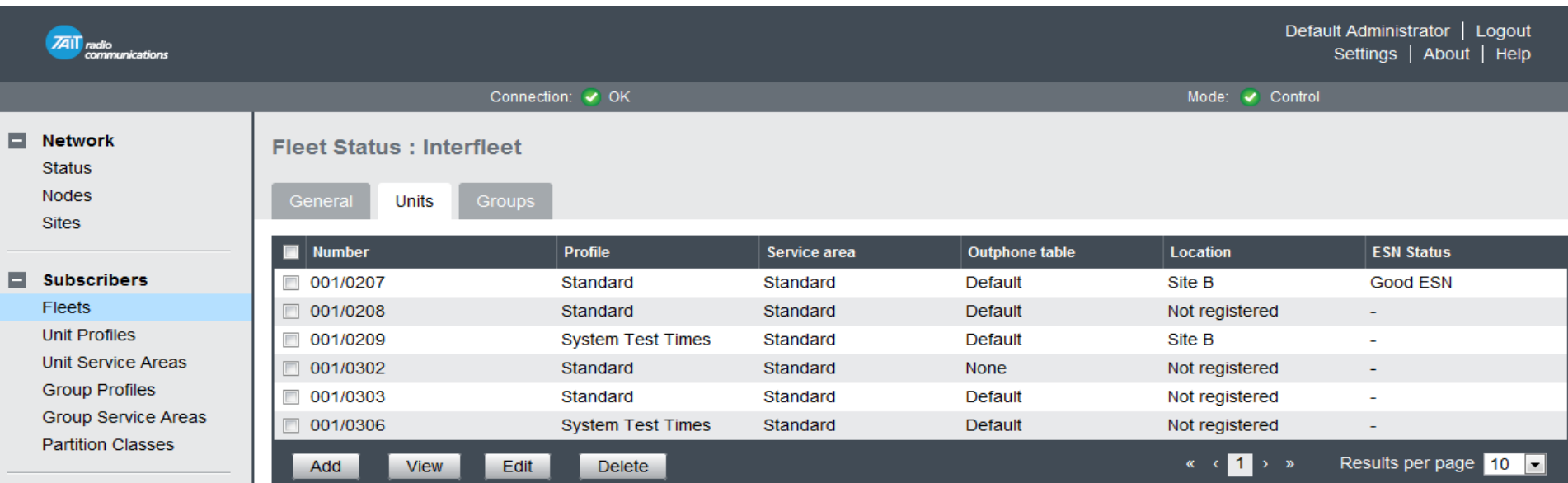
How does your network perform

- **Use management reports to inform you on:**
 - How the network is being used
 - How the network performs
 - Identification of terminals on the network
 - How your coverage is
 - How did the network perform in an emergency situation



Fleet Management to support execution

- **Fleet management tools allow you to manage which devices can use the old network, the new network or both**



Default Administrator | Logout
Settings | About | Help

Connection: ✔ OK Mode: ✔ Control

Fleet Status : Interfleet

General Units Groups

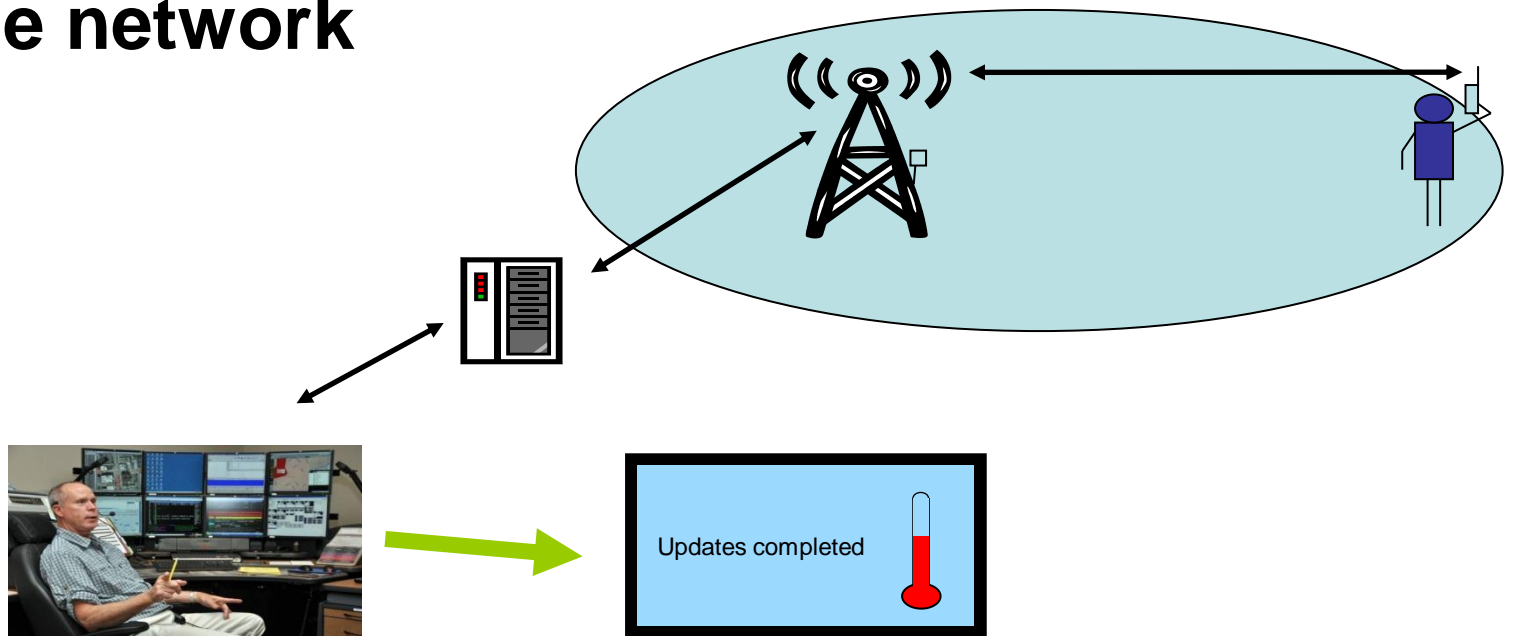
<input type="checkbox"/>	Number	Profile	Service area	Outphone table	Location	ESN Status
<input type="checkbox"/>	001/0207	Standard	Standard	Default	Site B	Good ESN
<input type="checkbox"/>	001/0208	Standard	Standard	Default	Not registered	-
<input type="checkbox"/>	001/0209	System Test Times	Standard	Default	Site B	-
<input type="checkbox"/>	001/0302	Standard	Standard	None	Not registered	-
<input type="checkbox"/>	001/0303	Standard	Standard	Default	Not registered	-
<input type="checkbox"/>	001/0306	System Test Times	Standard	Default	Not registered	-

Add View Edit Delete

« < 1 > » Results per page 10 ▾

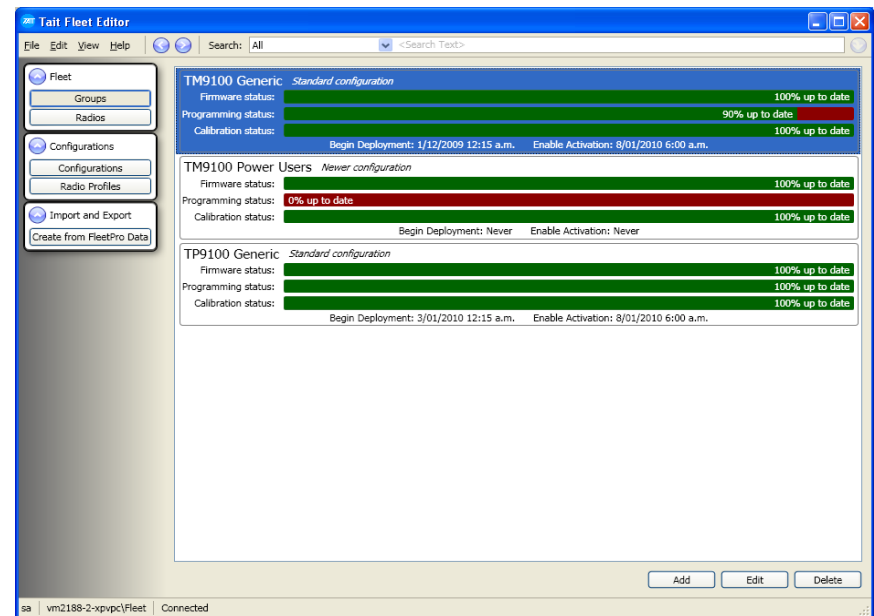
Remote configuration

- **Remote Configuration of your infrastructure allows you to gradually add features and functionality**
- **Remote monitoring informs you of the status of the network**



Terminal updates

- **Use OTAP for:**
 - Identifying your end-user devices and who uses them
 - Change configuration
 - Identify and update firmware



Successful Migration

- **Requires detailed planning and careful management**
- **Favours a gradual change over**
- **Network Management can assist to make the migration visible and cost effective**



Contact details:

Email: monique.princen@taitradio.com

Visit: Tait Radio Communications at the show